

First-Fix Instructions

Contents:

Method of installation

Central Services

Type of cable

Required types of Back Box and Codes

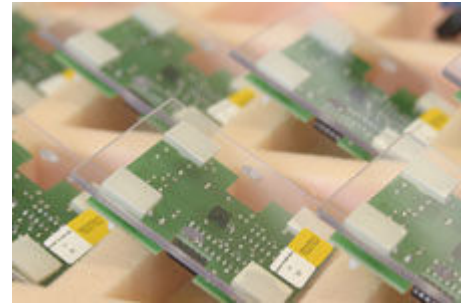
Product Model Numbers with Box Code

Method of installation

Addressable Receiver Units, Display Units, Intelligent Over Door Lights and Communications Units must be wired on the Data Ring.

Receiver Units to be programmed as Slaves (sharing an address of another) and Patient Call Buttons are spurred from the Addressable Receiver Units.

Over Door Lights are spurred from a Receiver Unit. There should be no more than 40 units of any kind attached to one ring. Rings should be no more than 250m in total length.



All Receiver Units should, wherever possible, be located centrally on the ceiling. No Receiver Unit should be located closer than 1500mm from a fluorescent light. Receiver Units located in corridors or large rooms should be spaced not more than 20 metres apart to give best coverage. In external areas Receivers should be spaced no more than 10-15 m depending on conditions.

DO NOT run the Data Ring near mains cables or mains switching equipment.

The Display Units should preferably be located 1500mm above floor-level or satisfactory eye level.

Central Services

Power Supplies/Data Ring Junction Boxes should be located centrally on the installation, providing the shortest Data and power routes to all locations and thus minimising any power losses in the cable.

Type of cable

All connections MUST be made using Pinpoint cable. Product Model 708A. For external use Product Model 709.

Required types of Back Box and Codes:

| BOX CODE | FLUSH FIT | SURFACE FIT |
|-----------|---|--|
| A | MK866ZIC Single Gang 35mm Deep | CENTAUR SBR/3 Single Gang 32mm Deep |
| B | MK877ZIC Single Gang 46mm Deep | CENTAUR SBR/9 Single Gang 44mm Deep |
| C | MK886ZIC Double Gang 35mm Deep | CENTAUR SBR/4 * Double Gang 32mm Deep |
| D | MK878ZIC Double Gang 47mm Deep | CENTAUR SBR/10 Double Gang 44mm Deep |
| PP | SUPPLIED BY PINPOINT | SUPPLIED BY PINPOINT |

* For Flush Fit in suspended ceiling use NEWLEC Dry Lining Boxes, 35mm Deep.

Product Model Numbers with Box Code:

| | | | | | |
|-------|----|---------|----|-------|----|
| 317 | A | 637 | D | 353.5 | PP |
| 492 | C | 132 | C | 353.7 | D |
| 493 | C | 132.1 | C | 391.1 | PP |
| 493.1 | C | 132.2 | C | 391.2 | PP |
| 493.2 | C | 132.3 | C | 391.3 | PP |
| 592 | C | 133 | A | 392 | PP |
| 594 | C | 133.1 | A | 360 | A |
| 594.1 | C | 133.2 | A | 360.1 | A |
| 594.2 | C | 133.3 | A | 360.2 | A |
| 690 | C | 133.4 | A | 360.3 | A |
| 692 | C | 219 | C | 360.5 | A |
| 332 | A | 296 | C | 360.6 | A |
| 333 | A | 476 | C | 363 | PP |
| 434 | PP | 476.1 | C | 365 | B |
| 434.1 | PP | 476.2 | C | 367 | C |
| 435 | PP | 349 | B | 373 | B |
| 435.1 | PP | 349.1 | C | 373.2 | B |
| 534 | PP | 349.2 | C | 374 | B |
| 534.1 | PP | 349.3 | C | 178 | C |
| 535 | PP | 349.5 | C | 296 | C |
| 535.1 | PP | 350 | PP | | |
| 636 | D | 353.3/4 | A | | |

N.B. If conduit is to be used then 25mm conduit is recommended. This may need to be larger at a Junction Box because of the number of cables.

Please contact us for further assistance.



Pinpoint Limited (Head Office), Methil Docks, Leven, Fife KY8 3RE
 Tel: +44 (0)1333 421706, Fax: +44 (0)1333 422757
 Registered office as above. Registered Number, Scotland 138358
 Email: info@pinpointlimited.com
 PINPOINT® is a Registered Trademark.